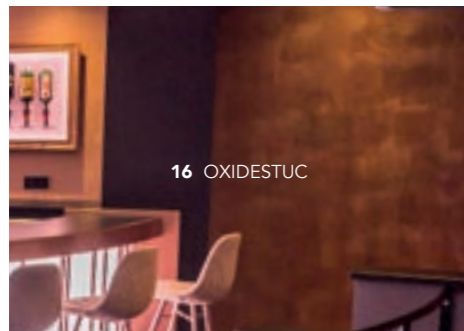
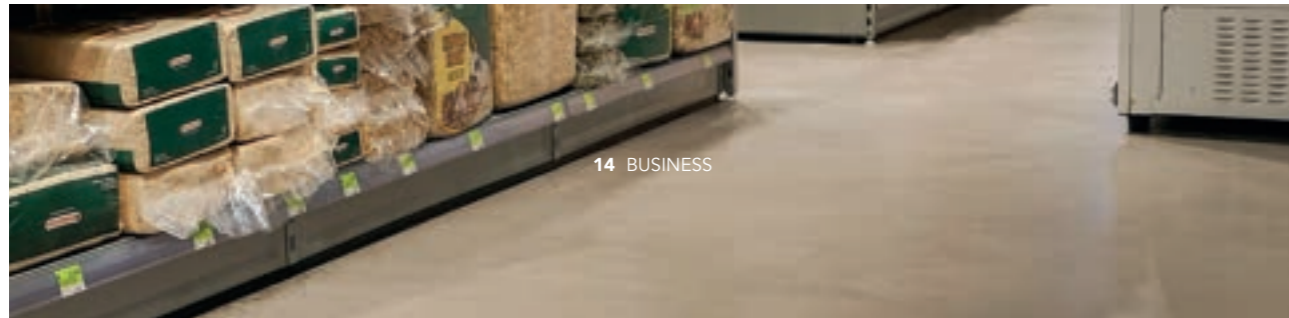
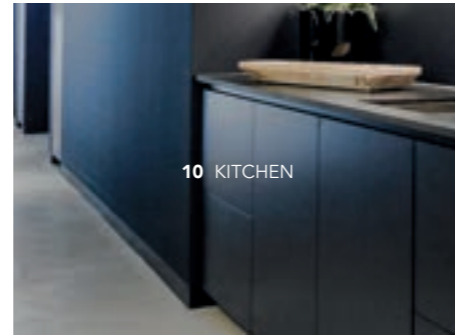
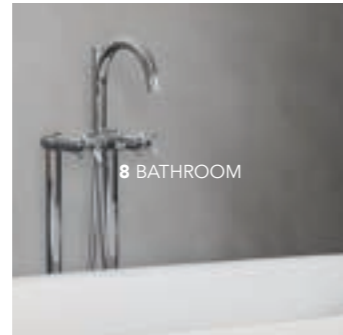
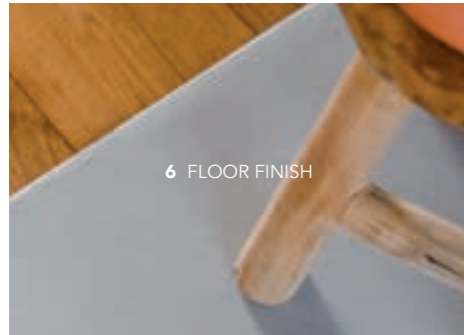




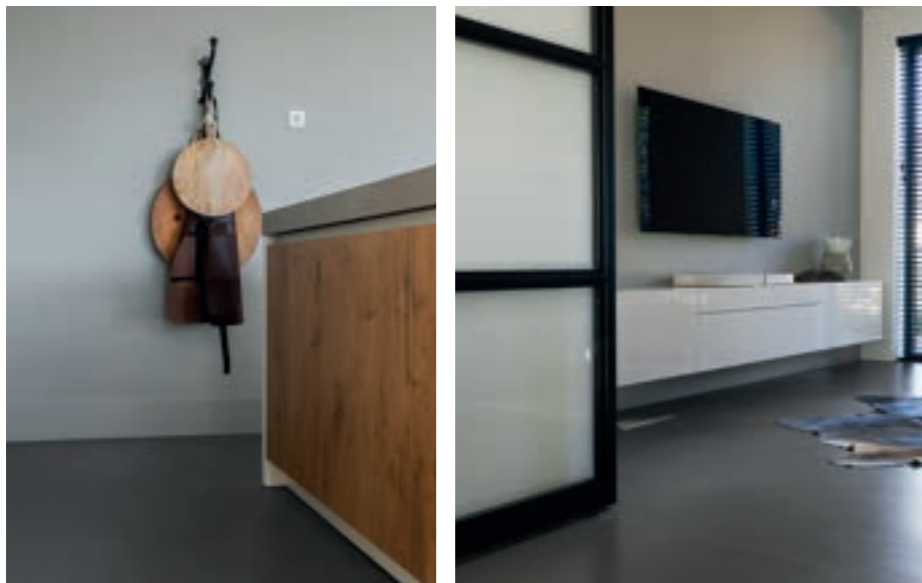
basebeton®
BY STONEAGE

basebeton®
index



**Delivered ready to use, in
the colour of your choice!**

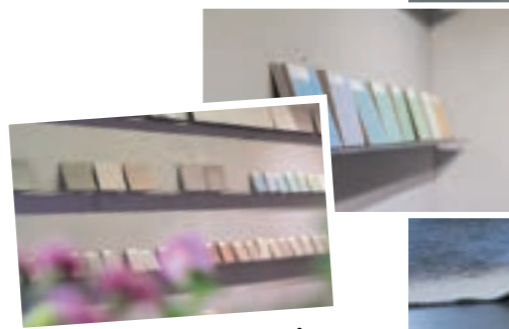
basebeton®
inspiration



Get inspired..

Basebeton has its own extensive colour collection and is available in any desired RAL- or NCS-colour! Add that special atmosphere to your interior and choose the colour that suits you best.

For more inspiration, please visit www.basebeton.nl.



#betonyourbasics



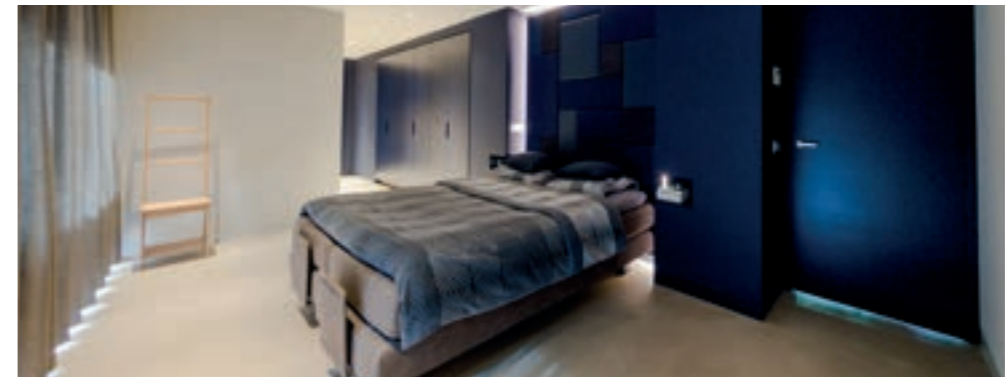
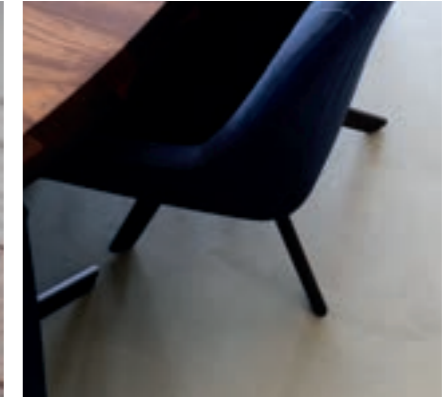
Create your own
atmosphere in an instant

basebeton®
floor finish

**A pure and robust
concrete floor**

— maximum layer thickness of 0,2–0,5 mm

**Extremely strong, waterproof, hygienic
and maintenance-friendly:**




Brings character to your interior

Super strong, easy to maintain, robust and beautiful: this is Basebeton in a nutshell. Basebeton is a popular floor finish in living rooms, kitchens, bathrooms, bedrooms and in other spaces. The concrete stucco has a sleek and robust structure and is available in many colours.

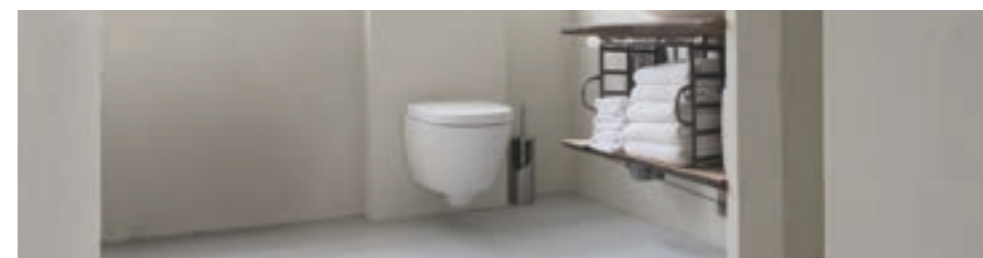
The perfect way to give your home that special look. Combine the concrete look with soft materials - such as blankets, throws and wool - for a warm and homely atmosphere.

basebeton®
bathroom

**Very suitable for
damp areas due
to a special coating**

 Waterbestendig

Time to relax... in your own Basebeton bathroom



In bathrooms, concrete stucco is a very popular alternative to tiling. The Basebeton stucco is applied seamlessly, which prevents wear and it is waterproof by itself. This distinguishes Basebeton from any other related product on the market.

A second unique feature of our Basebeton stucco is that it can be used on different surfaces. Even existing tiling can serve as a solid basis to apply the Basebeton concrete stucco. The main advantage? You will not be saddled up with miserable and time-consuming demolition work.

You simply level the tiling, after which the concrete stucco can be applied immediately. By doing this, you can achieve a sleek concrete look on your wall or floor within a few days.

Would you like to get more information on how quickly we can give your bathroom or toilet a 'Basebeton makeover'? Our employees are happy to come by to assess your specific situation and will draw up a tailor-made project planning.

basebeton®
kitchen

**A special living
and meeting place**



A unique appearance

Basebeton is seamless, very hygienic, does not stain and is easy to keep clean. In short, this unique stucco is very suitable for the kitchen.

By applying Basebeton, you can give your kitchen walls or floor that pure and robust appearance. Whatever colour you choose: Basebeton adds that little bit extra to your kitchen!

Maintenance tip!

In order to properly clean and maintain your new Basebeton wall or floor, we recommend to use our special Basebeton maintenance set.



**Concrete: applicable
within any style**



#betonyourbasics



**basebeton®
business**

**Not just practical,
but also trendy and hip**



Create a robust look for your business in an instant

Are you looking for a wall or floor finish that brings character to your shop, office or other commercial space? Basebeton is easy to maintain, scratch-proof and impact-resistant! Little renovation time?

Basebeton is ready-to-use and easy to apply. Pick your colour, apply the Basebeton and you're back in business!

Oxidestuc

Gives your space that extra gloss



Shine bright

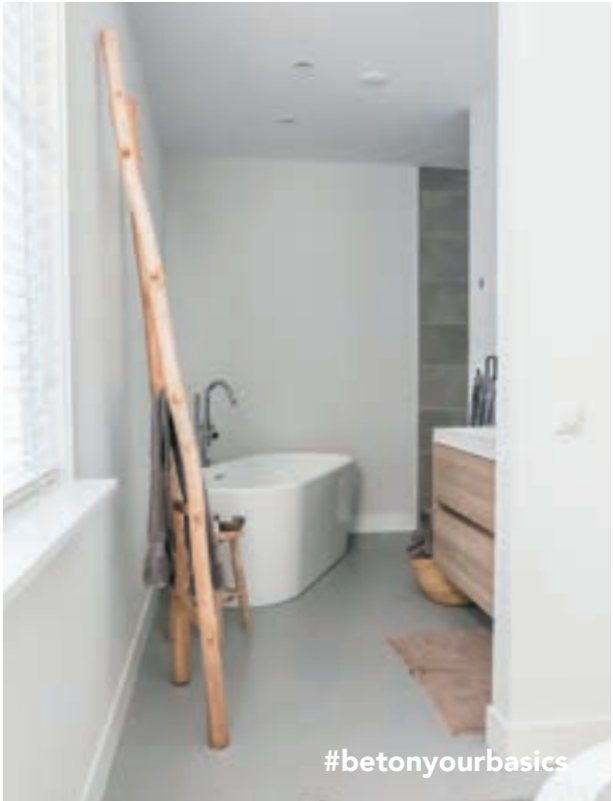
Looking for concrete stucco with a luxurious look? Then Oxidestuc is the perfect fit for your space. Add that extra gloss to your interior and choose one of the awesome colours from our collection!

Gold, Bronze or rather Steel...

Since Oxidestuc is a ready-to-use product, your space can easily be transformed with this luxurious concrete finish. Oxidestuc is a metallic-based stucco layer and is available in a set of metallic colours. It can be applied on both walls and floors in a wide variety of spaces. A special addition to your interior!



concrete: gives every room a special touch.



Technical Information sheet

Basebeton is a ready-made microcement paste with micronized quartz for application on floors and walls

Usage:

- To renovate existing floors or as replacement for carpets
- Can be applied on both floors and walls due to its strong adhesion
- Available in eight standard colours, but can be delivered in any desired RAL - or NCS - colour
- Suitable for indoor use only

Basebeton can be used for:

- coating and decorating of walls, floors, furniture, shelves and countertops
- floors with radiant heating, as long as the heating system has been installed in accordance with its approved safety precautions and the appropriate self-levelling base mortar has been used, in order to prevent any cracking problems to the outer layers of the product and therefore to the product itself.

We recommend to use BaseBeton Primer for wooden, concrete and absorbent surfaces. For any other surface which is not yet smooth, clean or stable enough for application, we recommend to use SA Epoxy Resin as primer.

Please note that the BaseBeton Primer should be diluted with water on a 1:1 mixing ratio when applied on porous surfaces.

After the Primer has been applied, please mix the BaseBeton Basa paste with a blender at low speed until the mixture is completely homogeneous. The first layer of BaseBeton paste can be applied by using a special plastering knife. Distribute the first layer of paste as evenly as possible for an equal thickness across the surface. This first layer is decisive for the look and feel of the eventual BaseBeton finish.

After the first layer has dried up sufficiently (touch dry), the second and final layer of BaseBeton paste can be mixed and applied. As the second and final layer, BaseBeton Sense paste can be used*. When applying this second layer of paste, please note that for an optimal effect we advise to use the same plastering knife as was used to apply the first layer of BaseBeton paste. Protective shoe covers are recommended to prevent any disturbing foot prints while applying the BaseBeton.

Once the second layer is 24 hours dry, the BaseBeton will have to be sanded by using an eccentric rotating sanding machine. For this sanding process, we recommend to use sanding paper with a grain size of 120 or 80. The sanding intensity directly influences the final result. Once the sanding is finished, the sanded surface needs to be dedusted by using an industrial vacuum cleaner.

To acquire the desired final BaseBeton look, please use the special BaseBeton Coating. This coating can best be applied by using a nylon roller. Please be aware that depending on temperature, humidity, working practice and/or local customs, the product can vary in terms of drying, hardness, workability and grain size in accordance with the client's preferences.

Consumption

BaseBeton Primer	: +/- 100 grams per m ²
BaseBeton Basa paste	: +/- 700 grams per m ²
BaseBeton Sense paste	: +/- 300 grams per m ²
BaseBeton Coating	: +/- 100 grams per m ²

Application conditions

- Required room temperature of 18 – 25 °C
- Required material and surface temperature of 12 – 18 °C
- Relative humidity: 40 – 70 %

Conservation

Up to 12 months after the production date, unless stored in the original and closed container and not being exposed to the elements and/or humidity.



Specifications

Type / Appearance	: Paste
Apparent density , Basa paste	: Pre application 1.400 kg / m ³ , Hardened 2.000 kg / m ³
Apparent density, Sense paste	: Pre application 1.300 kg / m ³ , Hardened 1.800 kg / m ³
Maximum lifespan of the BaseBeton mixture	: 7 hours
Maximum aggregate size	: 0,1 mm

Resistance specifications (EN 1015-11):

- Compression after 28 days	: Basa 30 N/mm ² – Sense 30 N/mm ²
- Flexion after 28 days	: Basa >12 N/mm ² – Sense >10 N/mm ²
- Concrete adhesion after 28 days	: Basa and Sense 1,6 N/mm ²
- Maximum applicable thickness, Basa paste	: 0,2 to 0,5 mm per layer
- Maximum applicable thickness, Sense paste	: 0,1 to 0,5 mm per layer
- Reaction to fire testing (EN 13501-1)	: A1



basebeton®



STONEAGE[®]
NATUURLIJK, PUUR & AUTHENTIEK

Butaanstraat 10 | 7463 PG Rijssen | 0548 - 544 449 | info@stoneage.nl | www.stoneage.nl



@stoneagerijssen



@stoneagerijssen